

UNIVERSITY OF KANSAS MEETING IN 2015



Society for the Study of Amphibians and Reptiles

co-sponsored by Partners in Amphibian and Reptile Conservation (PARC)

together with the herpetological societies of Arkansas, Kansas, and Missouri and the International Society for the History and Bibliography of Herpetology

KEYNOTE LECTURER



David Hillis

University of Texas at Austin
Evolutionary Insights from Studying Amphibians and Reptiles

Symposium

Evolutionary Frontiers in Herpetology
Organized by Rich Glor and Rafe Brown

This event will bring together a suite of primarily early-career, exceptionally research-active herpetologists working at the forefront of emerging evolution-related fields, using amphibians and reptiles as study systems. Topics will include, but not be limited to, the fundamentals of adaptation, speciation, adaptive radiation, evolutionary dynamics of infectious disease, convergence, phenotypic evolution, and the evolution of development—all through the lens of genomic approaches to understanding evolution of amphibians and reptiles. ■

SSSAR will hold its 2015 meeting on the beautiful campus of the University of Kansas, one of America's major research universities and a world center for research and graduate education in herpetology. This will be held from **Thursday, July 30 through Monday, August 3**. All scientific sessions will be held in the Kansas Union, which is adjacent to the Museum of Natural History and only a 5-minute walk from the air-conditioned student dorms where most persons will stay. The society held highly successful meetings at KU in 1977 and 1996, and we anticipate another memorable event in 2015. The intimate campus setting will facilitate personal and friendly interactions while moderating fees for registration and lodging (see projected rates below).

The structure of the meeting will include the standard oral presentations and poster sessions, silent and live auctions, commercial and non-commercial display booths, student social, topical symposia, and special lecturers (see adjacent columns). In addition, we are resurrecting some activities from earlier SSAR meetings that were extremely popular with delegates. These include the following:

- Audiovisual shows arranged by David Dennis and Eric Juterbock, completely re-done using modern digital technology (see below).
- Tours of the Henry Fitch Natural History Reservation, where Fitch's classic long-term studies were conducted. These tours will be led by George Pisani, who was Fitch's last field collaborator.

PRESIDENTIAL LECTURER

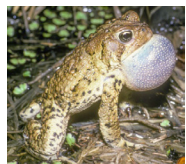


Miguel Vences

Technical University of Braunschweig (Germany)
Inventory of an Imperiled Paradise: Two Decades of Herpetology in Madagascar

- Tours of the newly renovated herpetological research laboratories in the Museum of Natural History and Biodiversity Institute.
- Display of live Kansas amphibians and reptiles, with photographic set-ups for your use.
- Reception honoring distinguished senior herpetologists. This event is being designed specifically so that students will have an opportunity to meet the honorees on a personal level.
- Herpetological Quiz, being arranged by the herpetology graduate students at the University of Texas at Arlington and those at KU. Separate student and professional categories, with prizes to the winners.

NOTE: Other symposia are in the planning stages. These will be announced in future updates.



In 1979, SSAR premiered the first of four half-hour audiovisual shows featuring herps, herp habitats, and herpetologists, that became highly popular events at its annual meetings over the next 25 years. These shows have not been seen for ten years and are now being completely revised using high-definition Blue Ray technology. Most of the photography will be completely new. Several of these newly revised shows will debut at the KU meeting in 2015.



PROJECTED COSTS FOR 2015

- **Registration fees (member rates):**
 - Students US \$150
 - Regular \$295
 - Seniors, retired / over 70 \$150
- **Dorm room rates (on campus, linens included):**
 - Dual-occupancy rooms or suites, per day starting at \$35
 - Single-occupancy rooms or suites, per day starting at \$55

There are also several local motels and a major hotel at the edge of campus. The motels allow more persons per room, at lower per-person costs than for the on-campus dorms (as low as \$25/person). Full details will be supplied in the formal *Announcement and Registration Information* that will be posted on-line in Spring 2015.